

Customer :

customer

Customer part :

customer part

Comment :

Comment

S1=3.13

S2=26.03

Tmax=430

Tp S2=469.0

PI=0.11

HI=533

Sample =753.47

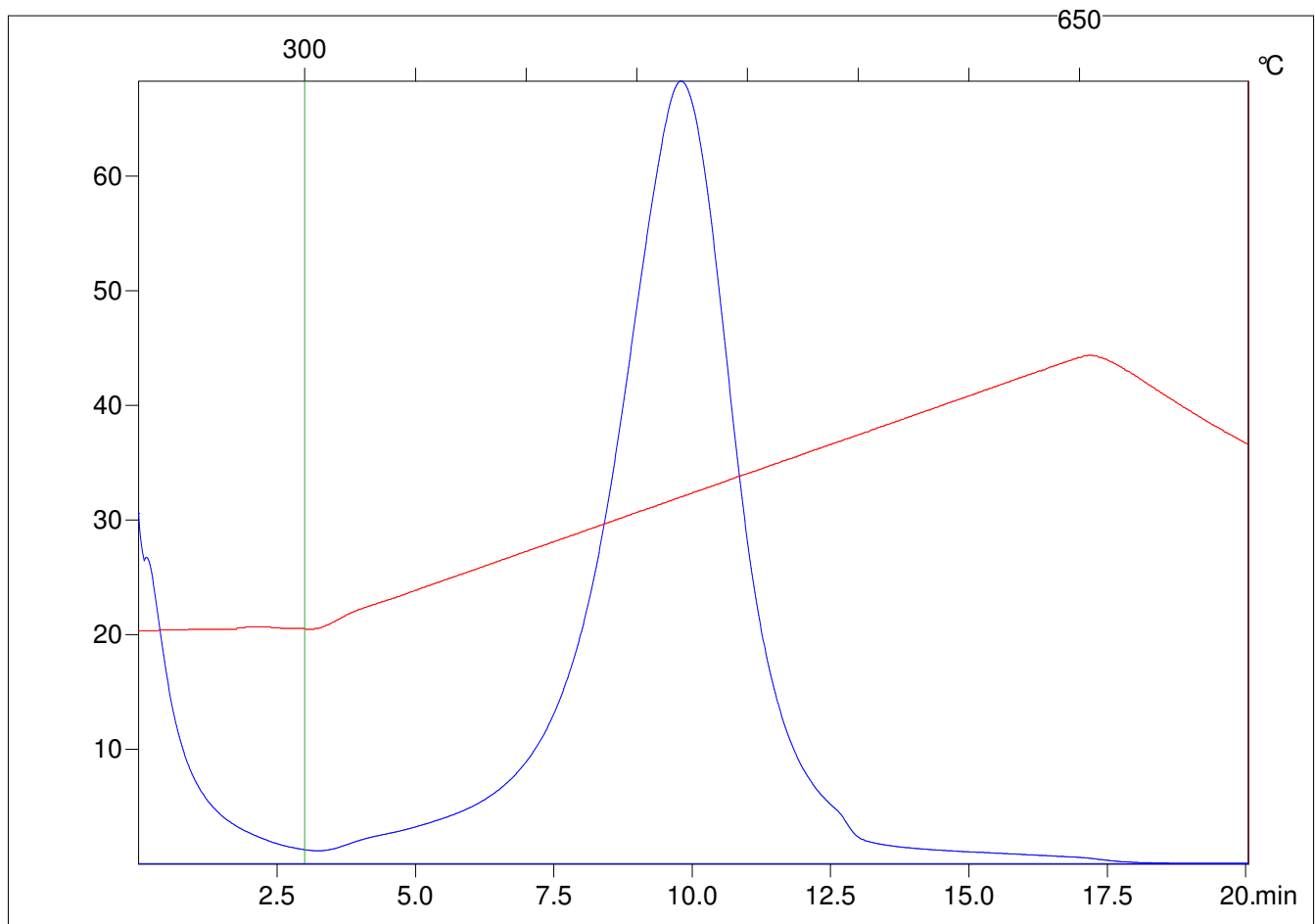
Method =Bulk Rock

Cycle=Basic

KFID(10*9)=1550

Qty =70.6

TOC=4.88



C:\VINC\PK130315\PK003.R00 : FID pyrolysis graphic

State

Pyro Status

Oxi Status